



Federal Aviation
Administration

Rotorcraft Standards Branch AIR-680

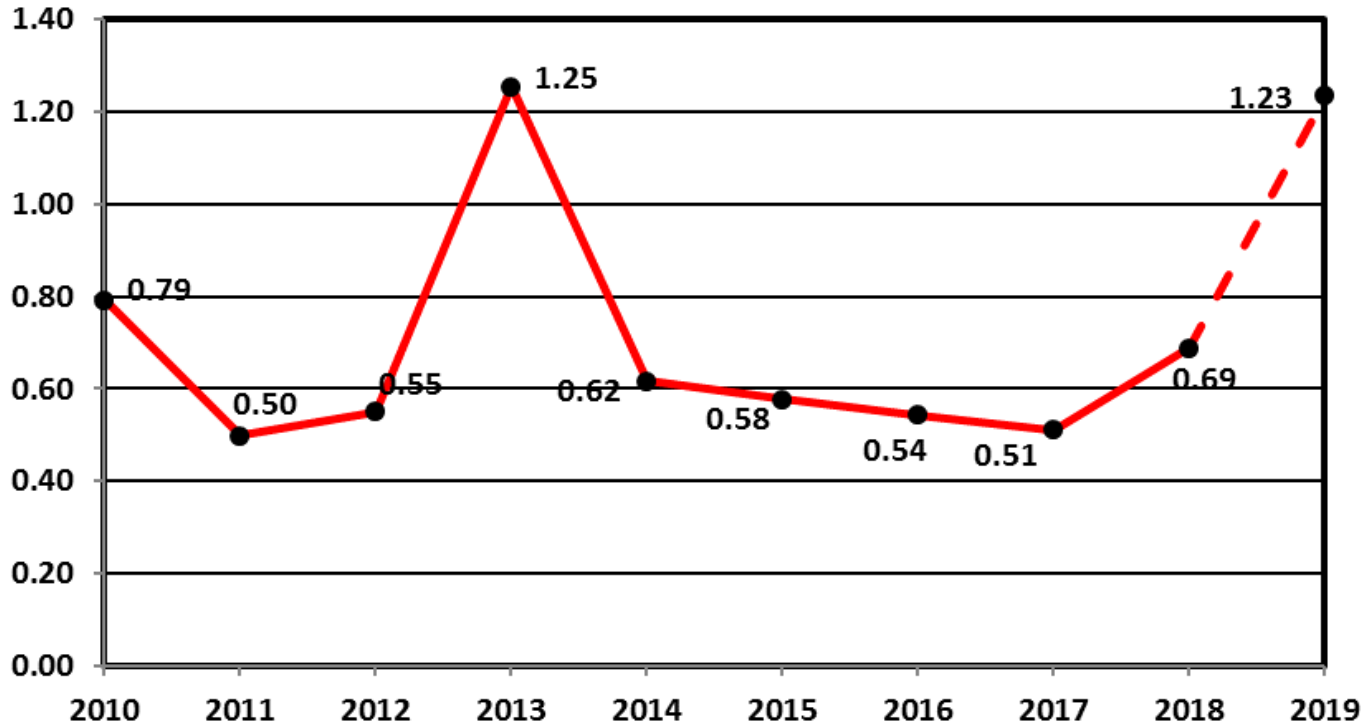
Monthly Accident Briefing

Nov 2018

By: AIR-682, Safety Management Section,
Rotorcraft Standards Branch



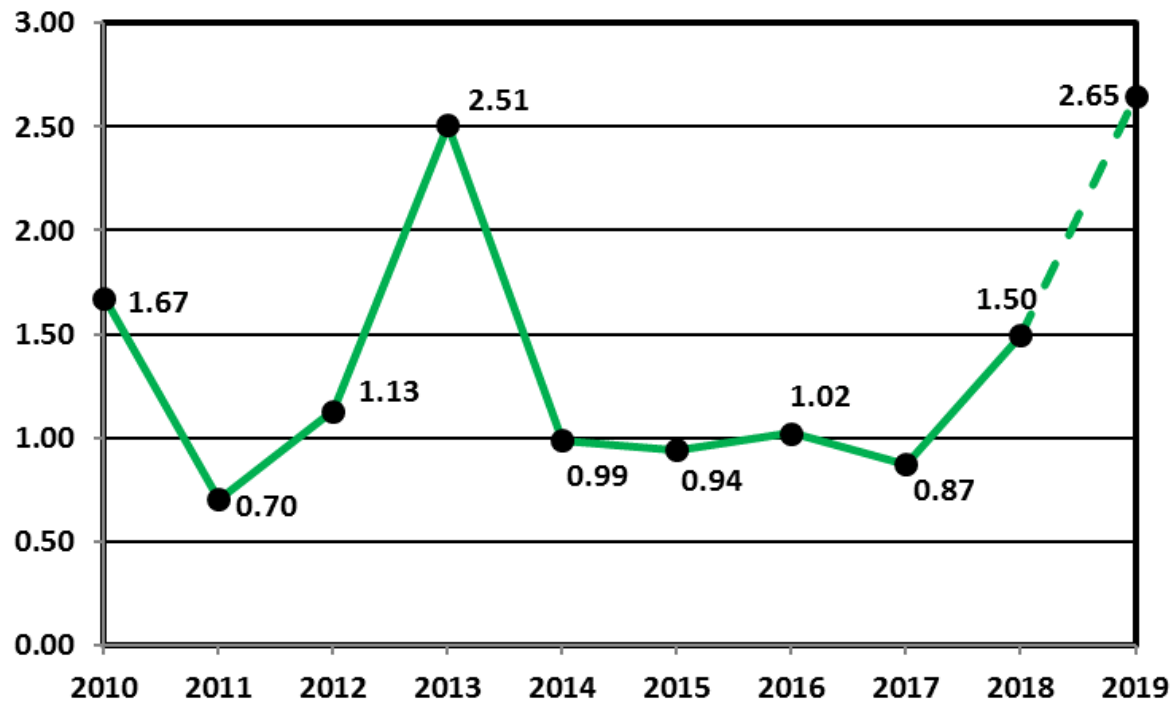
Estimated U.S. Rotorcraft FATAL Accident Rate (per 100,000 hours) – 10 Year Lookback



Rate calculation based on the following:

- 1) Accident totals compiled by AIR-682.
- 2) Historic rotorcraft flight hours extracted from General Aviation and Part 135 Activity Survey. The survey categorizes flight hours by calendar year. Assumption was that hours would be comparable if used for fiscal year calculations.
- 3) FY 11 rotorcraft flight hours and the projected hours for FY 18-19 were based on the FAA's FY2018-2038 forecast (released March 2018).

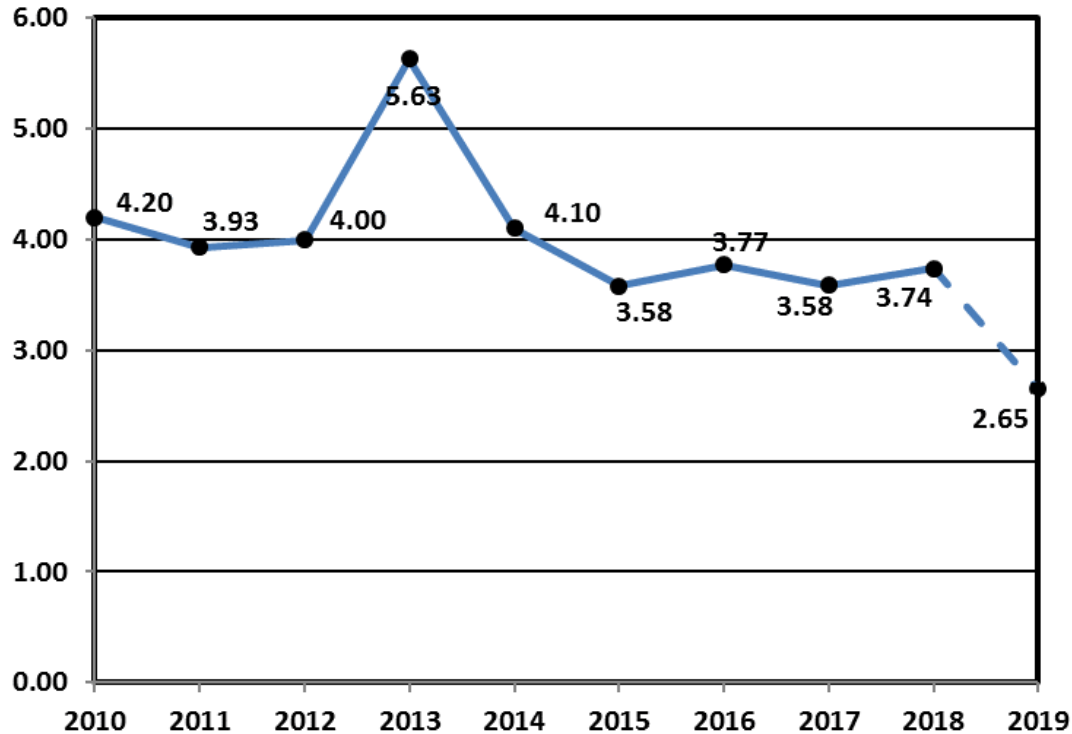
Estimated U.S. Rotorcraft Fatality Rate (per 100,000 hours) – 10 Year Lookback



Rate calculation based on the following:

- 1) Accident totals compiled by AIR-682.
- 2) Historic rotorcraft flight hours extracted from General Aviation and Part 135 Activity Survey. The survey categorizes flight hours by calendar year. Assumption was that hours would be comparable if used for fiscal year calculations.
- 3) FY 11 rotorcraft flight hours and the projected hours for FY 18-19 were based on the FAA's FY2018-2038 forecast (released March 2018).

Estimated U.S. Rotorcraft Accident Rate (per 100,000 hours) – 10 Year Lookback



Rate calculation based on the following:

- 1) Accident totals compiled by AIR-682.
- 2) Historic rotorcraft flight hours extracted from General Aviation and Part 135 Activity Survey. The survey categorizes flight hours by calendar year. Assumption was that hours would be comparable if used for fiscal year calculations.
- 3) FY 11 rotorcraft flight hours and the projected hours for FY 18-19 were based on the FAA's FY2018-2038 forecast (released March 2018).

FY 19 – U.S. Registered Rotorcraft Event Counts

| | Oct | Nov | Dec | Jan | Feb | Mar | Apr | May | Jun | Jul | Aug | Sep | YTD |
|--------------------|-----|-----|-----|-----|-----|-----|-----|-----|-----|-----|-----|-----|-----|
| Accidents: | 7 | 8 | | | | | | | | | | | 15 |
| Fatal Acc: | 3 | 4 | | | | | | | | | | | 7 |
| Fatalities: | 4 | 11 | | | | | | | | | | | 15 |

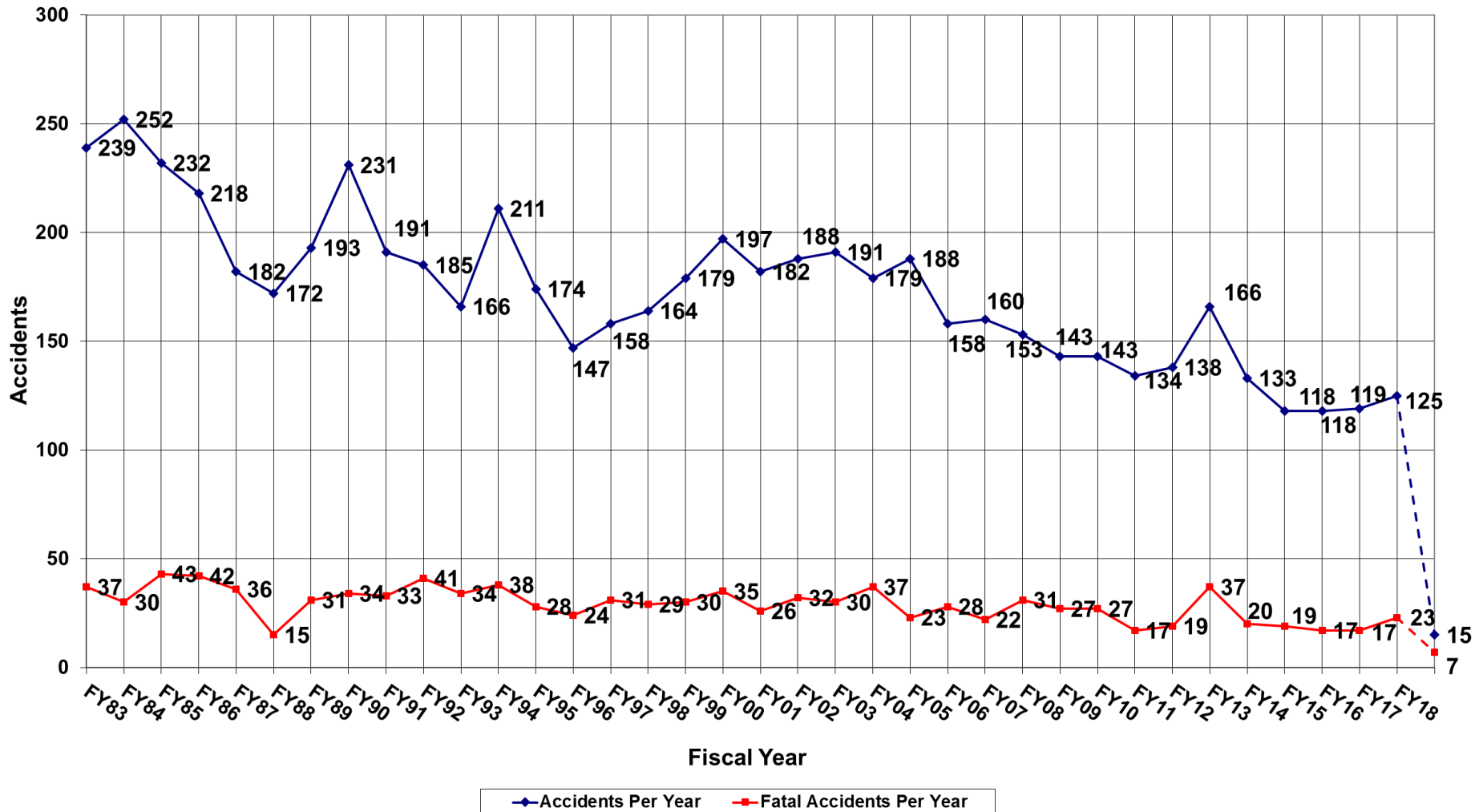
Same time period, previous FY: 18 Accidents, 6 Fatal Accidents, 10 Fatalities

Data Source: FAA, NTSB Databases. Includes only events classified as accidents and does not include incidents. The accident numbers for each month of the Fiscal Year may vary from the previous monthly briefing based on analysis between FAA and NTSB databases for the specified month. The NTSB database may include accidents that were not reported to this office resulting in slightly different numbers.

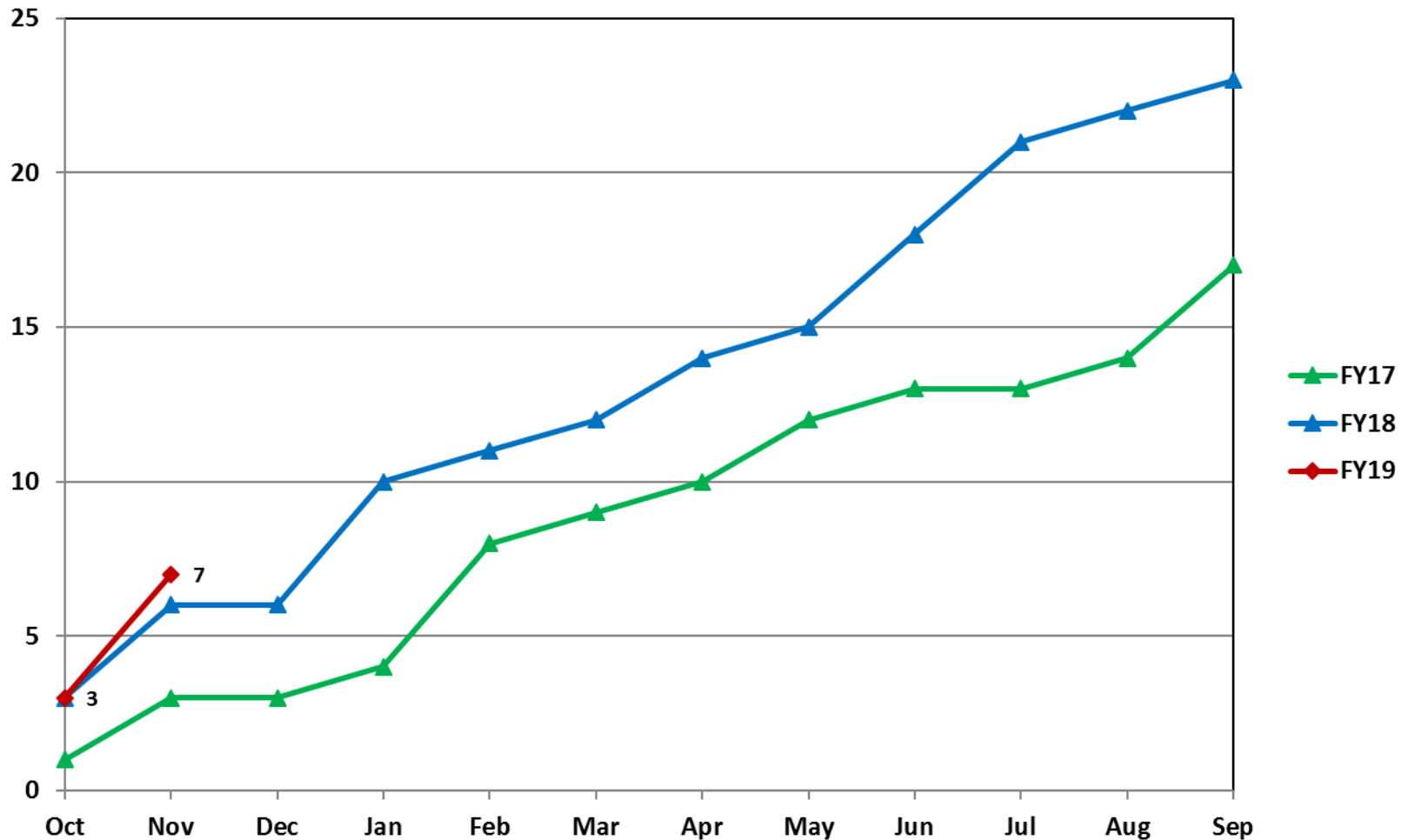
Estimated Rates by Month (per 100,000 flight hours)

| | Oct | Nov | Dec | Jan | Feb | Mar | Apr | May | Jun | Jul | Aug | Sep | YTD |
|--------------------|------|------|-----|-----|-----|-----|-----|-----|-----|-----|-----|-----|------|
| Accidents: | 2.29 | 3.06 | | | | | | | | | | | 2.65 |
| Fatal Acc: | 0.98 | 1.53 | | | | | | | | | | | 1.23 |
| Fatalities: | 1.31 | 4.21 | | | | | | | | | | | 2.65 |

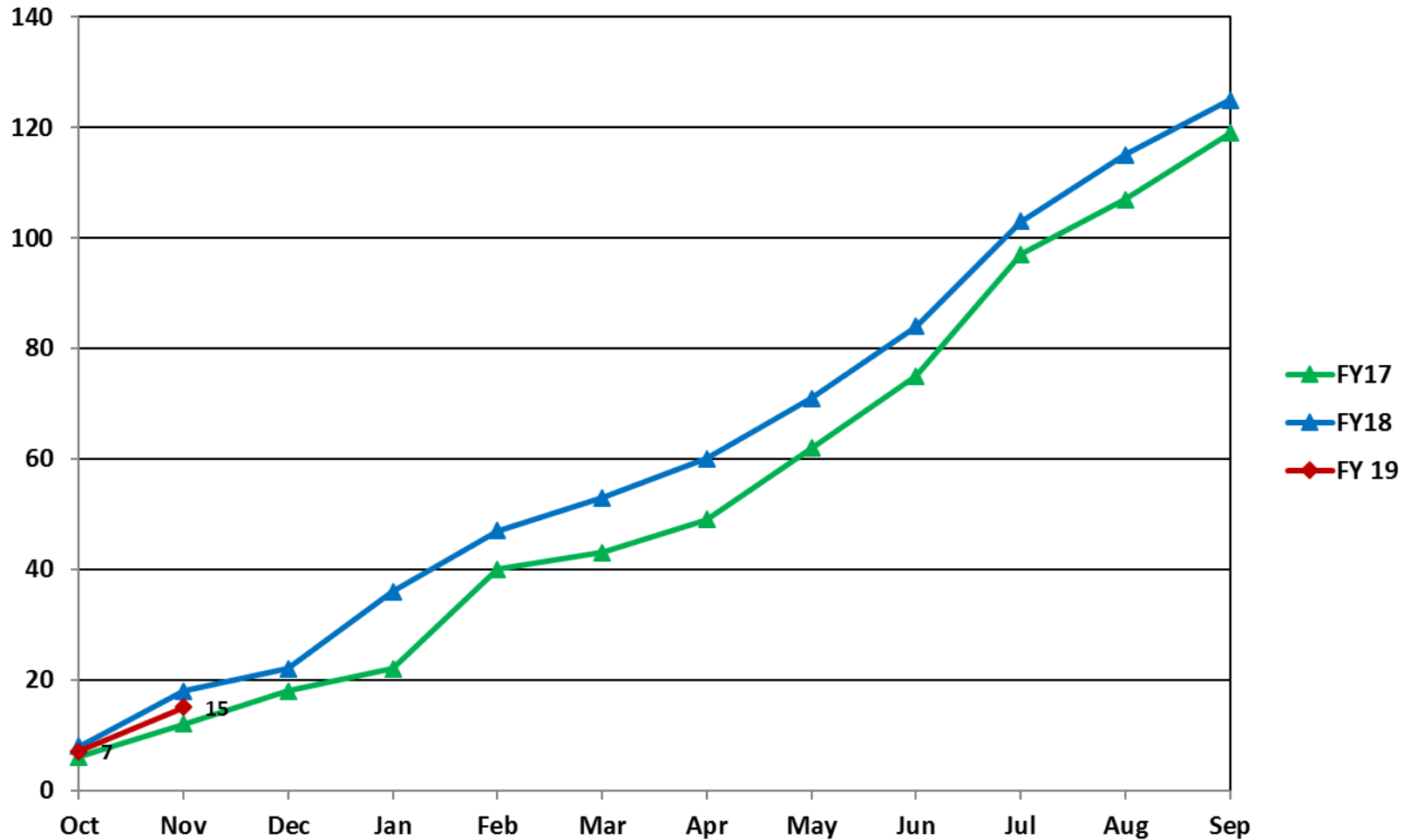
U.S. Registered Rotorcraft Accidents FY83 - FY19



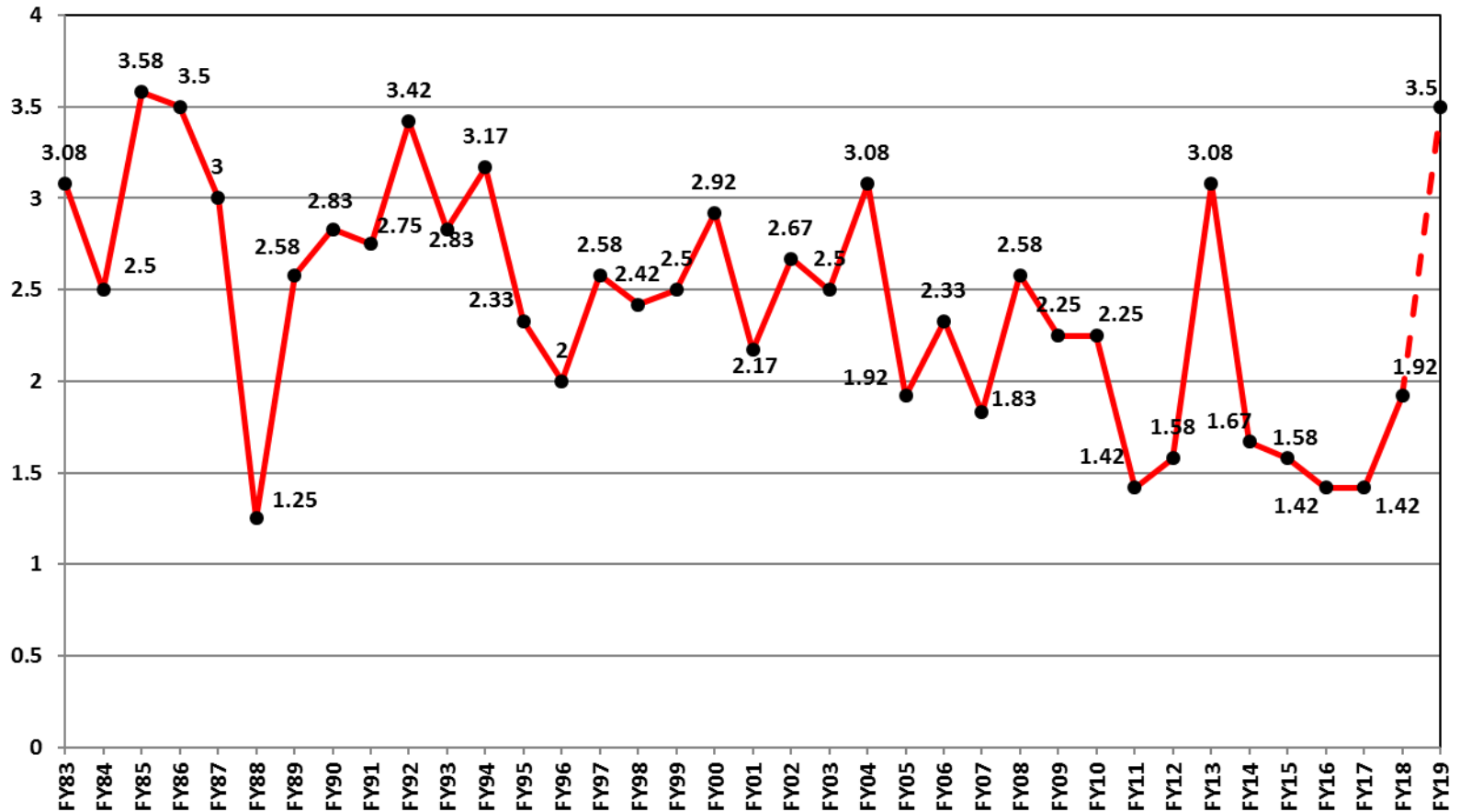
U.S. Registered Rotorcraft Cumulative Fatal Accident Count: FY17 - 19



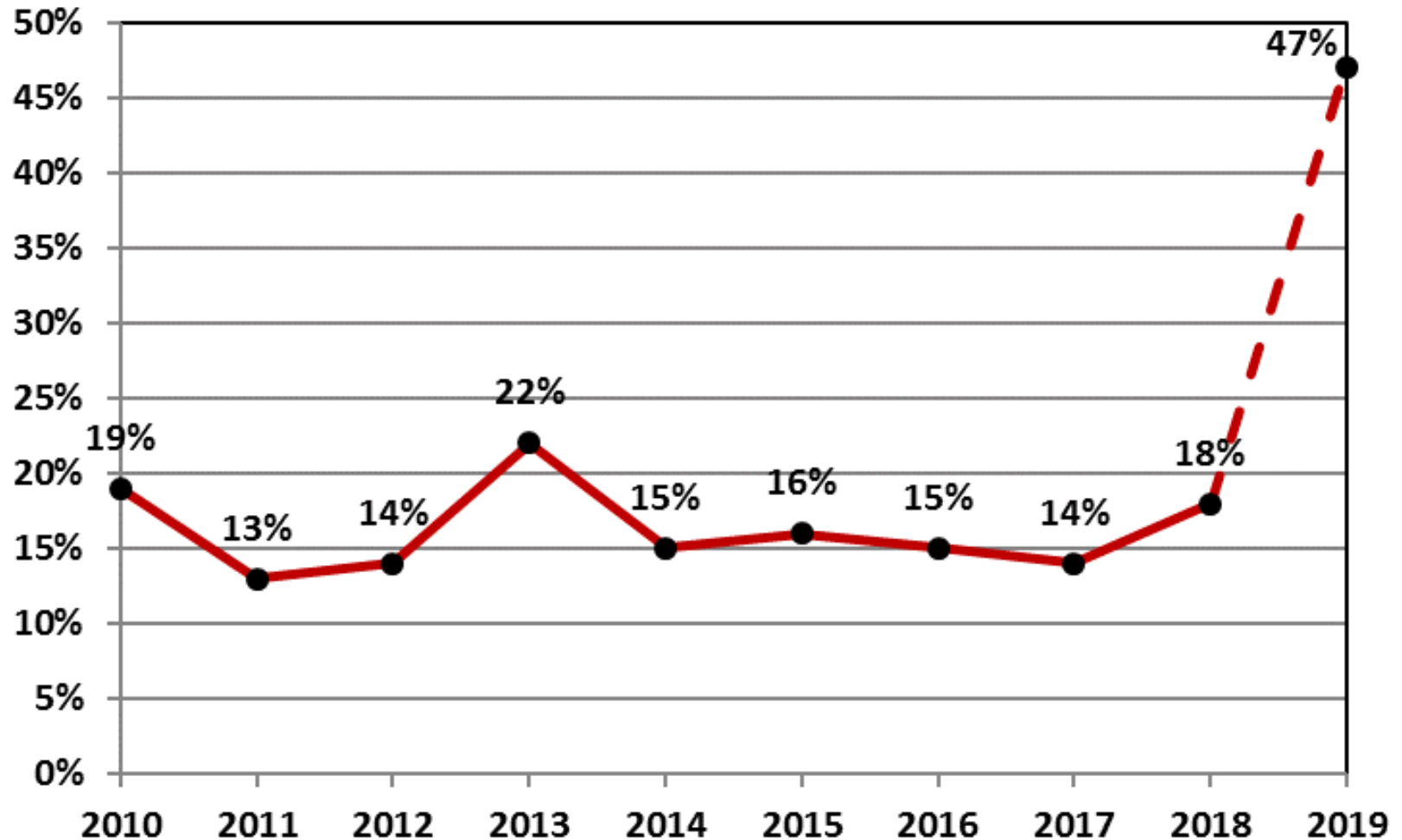
U.S. Registered Rotorcraft Cumulative Accident Count: FY17 - 19



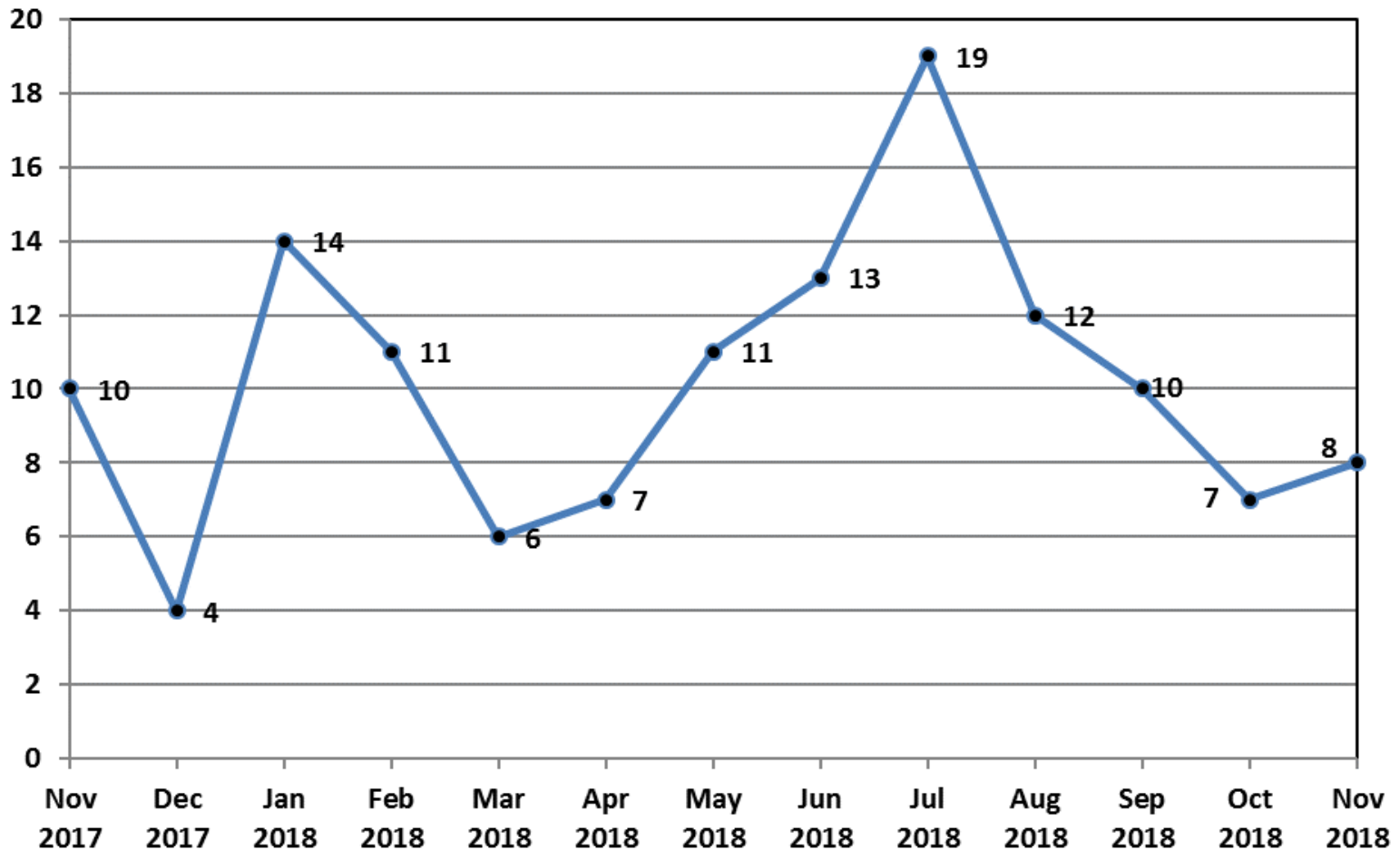
U.S. Registered Rotorcraft Average Fatal Accidents Per Month, FY83-FY19



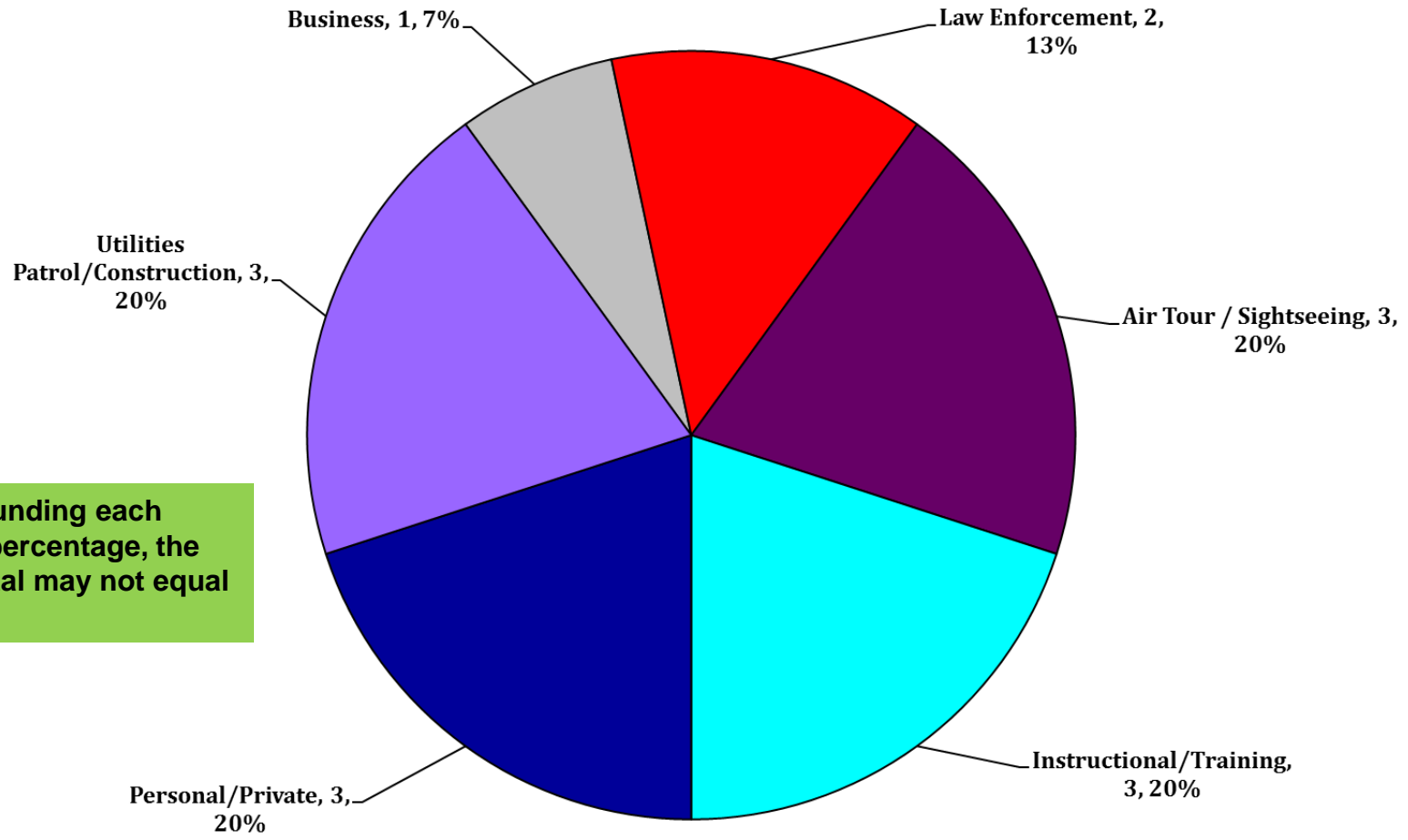
% of U.S. Rotorcraft Accidents with a Fatality (FY19, Oct-Nov)



U.S. Registered Rotorcraft 13 Month Rolling Accident Count



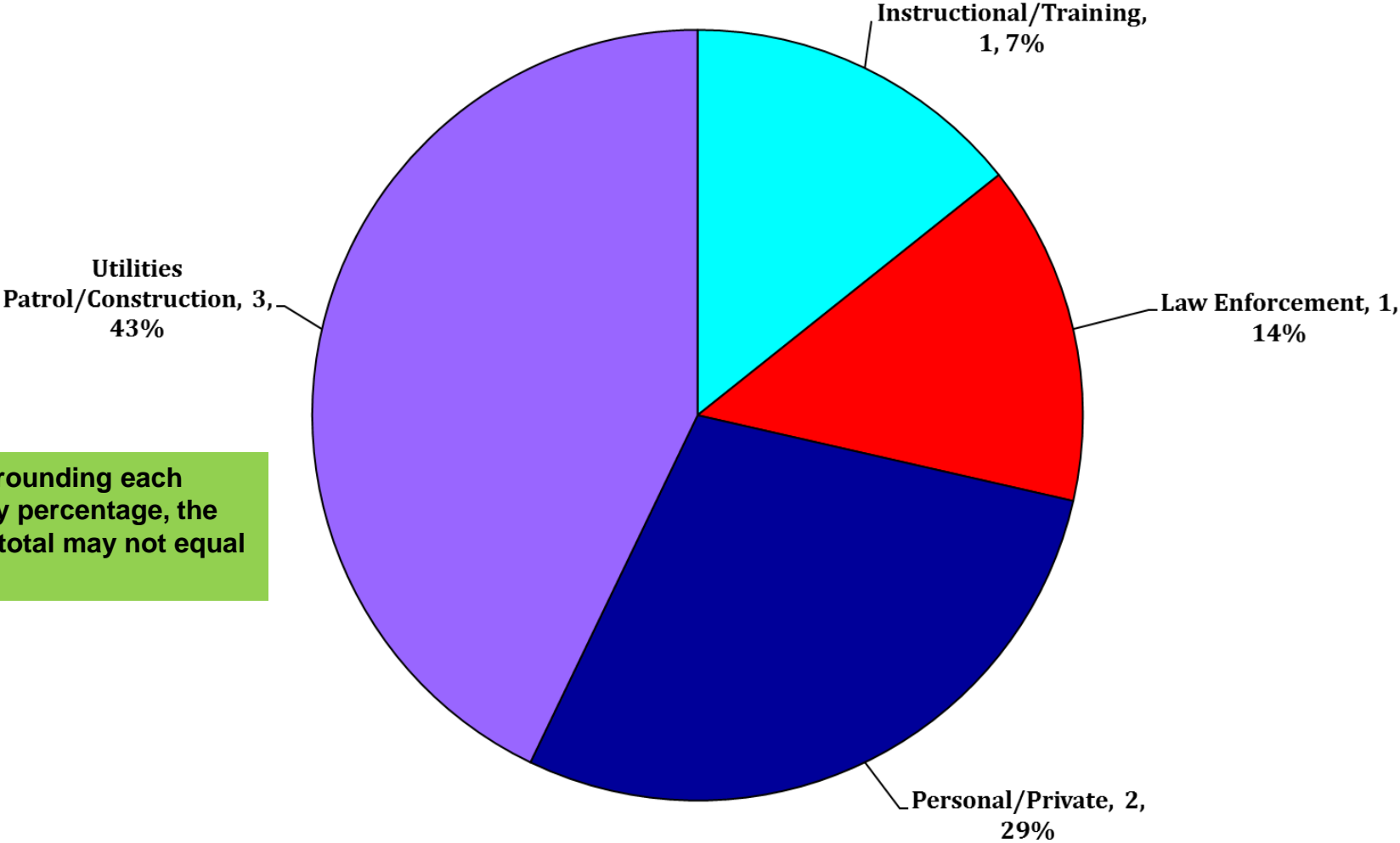
FY 19 – Total Accidents by Industry (Oct-Nov 2018)



Due to rounding each Industry percentage, the overall total may not equal 100%.



FY 19 – Total FATAL Accidents by Industry (Oct-Nov 2018)



Due to rounding each industry percentage, the overall total may not equal 100%.



FY 19 – U.S. Registered Fatal Rotorcraft Accidents

- 11-16-18 – Bell OH-58C, N510CP, Clanton, AL, Part 91, 2 Fatal
 - Law enforcement, positioning flight from Columbus, GA to Auburn, AL
 - Struck powerlines and impacted the Coosa River [NTSB: ERA19FA047](#)
- 11-4-18 – Bell 206B, N417WT, Uvalde, TX, Part 91, 3 Fatal
 - Personal use; night flight departed private ranch en route to San Antonio
 - Collided with 1,450 foot hill about 5 miles from ranch [NTSB: CEN19FA024](#)

FY 19 – U.S. Registered Fatal Rotorcraft Accidents

- 11-2-18 – MDHI 369D, N5187S, McDougal, AR, Part 133, 1 Fatal, 2 Minor
 - Utilities Patrol/Construction; utility line work w/2 linemen attached
 - Impacted a utility pole and crashed [NTSB: CEN19FA020](#)

- 10-30-18 – Airbus Helicopter AS355F2, N372CA, Beekmantown, NY, Part 133, 2 Fatal, 2 Serious
 - Utilities Patrol/Construction; stringing fiber optic line along existing power lines
 - Contacted lines, became entangled, fire ensued [NTSB: ERA19FA035](#)

- 10-29-18 – Airbus Helicopter AS350B3, N910S, Odanah, WI, Part 91, 1 Fatal
 - Utilities Patrol/Construction; oil and gas aerial pipeline patrol
 - Crashed under unknown circumstances, post-crash fire [NTSB: CEN19FA018](#)

- 10-17-18 – Robinson R22, N923SH, Fulton, MO, Part 91, 1 Fatal
 - Instructional/Training; Solo cross country flight to Columbia, MO
 - Crashed while enroute [NTSB: CEN19FA009](#)

FY 19 – U.S. Registered Fatal Rotorcraft Accidents Occurring Outside the U.S.

- 11-22-18 – Airbus Helicopter EC120B, N124ML, La Romana, Dominican Republic, 5 Fatal
– Crashed under unknown circumstances NTSB: ERA19WA054



FY 19 - US Rotorcraft Accidents By Model

| MFR | Model | Registered U.S. Fleet Size | Percentage of Total U.S. Fleet | Number of FY19 U.S. Registered Accidents | Percentage of Total FY19 U.S. Registered Accidents |
|---------------------------|---------------------|----------------------------|--------------------------------|--|--|
| Airbus Helicopters | AS350 (H125) | 918 | 7% | 1 | 7% |
| | AS355 | 47 | < 1% | 1 | 7% |
| | BK117 (H145) | 203 | 2% | | |
| | EC120 (H120) | 95 | 1% | 1 | 7% |
| | EC130 (H130) | 247 | 2% | | |
| | EC135 (H135) | 311 | 2% | | |

Only models that comprise at least 1% of U.S. registered rotorcraft are listed unless an accident has occurred.

*Fleet size based on analysis of rotorcraft on FAA registry as of Apr 2018

FY 19 - US Rotorcraft Accidents By Model

| MFR | Model | Registered U.S. Fleet Size | Percentage of Total U.S. Fleet | Number of FY19 U.S. Registered Accidents | Percentage of Total FY19 U.S. Registered Accidents |
|-------------|--------------|-----------------------------------|---------------------------------------|---|---|
| Bell | 206Bs | 1,027 | 8% | 1 | 7% |
| | 206Ls | 580 | 5% | | |
| | 212 | 93 | 1% | | |
| | 407 | 722 | 6% | | |
| | 412 | 93 | 1% | | |
| | 429 | 85 | 1% | | |

Only models that comprise at least 1% of U.S. registered rotorcraft are listed unless an accident has occurred.

*Fleet size based on analysis of rotorcraft on FAA registry as of Apr 2018

FY 19 - US Rotorcraft Accidents By Model

| MFR | Model | Registered U.S. Fleet Size | Percentage of Total U.S. Fleet | Number of FY19 U.S. Registered Accidents | Percentage of Total FY19 U.S. Registered Accidents |
|-----------------|-------------|----------------------------|--------------------------------|--|--|
| Robinson | R-22 | 910 | 7% | 1 | 7% |
| | R-44 | 1,605 | 13% | 4 | 27% |
| | R-66 | 249 | 2% | | |

Only models that comprise at least 1% of U.S. registered rotorcraft are listed unless an accident has occurred.

*Fleet size based on analysis of rotorcraft on FAA registry as of Apr 2018

FY 19 - US Rotorcraft Accidents By Model

| MFR | Model | Registered U.S. Fleet Size | Percentage of Total U.S. Fleet | Number of FY19 U.S. Registered Accidents | Percentage of Total FY19 U.S. Registered Accidents |
|----------|-------|----------------------------|--------------------------------|--|--|
| Sikorsky | S-76 | 244 | 2% | | |
| | S-92 | 85 | 1% | | |

Only models that comprise at least 1% of U.S. registered rotorcraft are listed unless an accident has occurred.

*Fleet size based on analysis of rotorcraft on FAA registry as of Apr 2018



FY 19 - US Rotorcraft Accidents By Model

| MFR | Model | Registered U.S. Fleet Size | Percentage of Total U.S. Fleet | Number of FY19 U.S. Registered Accidents | Percentage of Total FY19 U.S. Registered Accidents |
|--|----------------|----------------------------|--------------------------------|--|--|
| Brantly | B-2 | 76 | 1% | | |
| Enstrom | 280 | 137 | 1% | | |
| | 480 | 69 | 1% | | |
| | F28 | 164 | 1% | 1 | 7% |
| Helicopteres Guimbal | Cabri G2 | 26 | < 1% | 1 | |
| Hiller | UH-12/H-23 | 311 | 2% | | |
| Leonardo (formerly Agusta Westland) | A109 | 174 | 1% | | |
| | A119 | 98 | 1% | | |
| | AW139 | 124 | 1% | | |
| MDHI | 369 | 718 | 6% | 1 | 7% |
| Restricted Category (all TCs) | HH-1/TH-1/UH-1 | 572 | 5% | | |
| | OH-58 | 442 | 3% | 2 | 13% |
| Schweizer Rotorcraft Services Group | 269/300/TH-55 | 557 | 4% | | |
| Scott's Bell | 47 | 628 | 5% | 1 | 7% |

Only models that comprise at least 1% of U.S. registered rotorcraft are listed unless an accident has occurred.

*Fleet size based on analysis of rotorcraft on FAA registry as of Apr 2018

U.S. Helicopter Safety Team (USHST) Fatal Accident Rate (Jan-Nov)

